



DuraFlex Press Lock

Lid lock for the majority of
500 to 1100l steel containers



The DuraFlex Press2Lock™ with its special security key has been designed and manufactured for recycling and trade waste containers alike

- to prevent scavengers & fly tipping,
- to prevent cross contamination of recyclables.

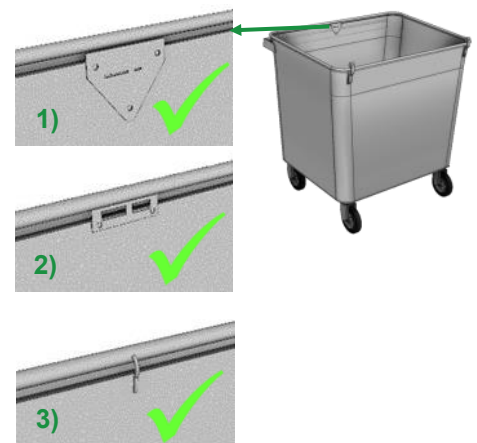
BENEFITS OF THE LOCK

- ✓ **Easy to operate:** The lid can be locked without using a key simply by pressing, it clicks shut & locks.
- ✓ **Designed not to lock unintentionally when lid shuts by mistake** greatly reduces the risk of people or animals getting locked in the bin. *(This benefit excludes all recycling lids as they are intended to be kept locked.)*
- ✓ **Easy to fit & no messy assembly:** Simply drill two 7mm holes in container and affix base, fit lock upper part into lid as a normal lock fits and lock together, then align and fit hinge bar.
- ✓ **Our specially designed pentagon shaped key** for the DuraFlex Press2Lock™ will aid security and help prevent cross-contamination of recyclables.
- ✓ In contrast to other similar locks, the DuraFlex Press2Lock™ has a **quarter turn anti-clockwise mechanism like standard lid locks.**
- ✓ **The security key is in line with EN840 requirements** & is similar to the standard triangular key in design and with the 50mm length allows safe operating when wearing gloves.
- ✓ **Incorporates an instruction plate that glows in the dark** and helps users at night.
- ✓ **The DuraFlex Press2Lock™ and the key are coloured red to distinguish them from standard locks.**
- ✓ **Completely maintenance free, no greasing.**



The **DuraFlex Press Lock** has been designed to fit any brand of steel container, without having to work to unobtainable tolerances, or having to buy new lids or new containers.

We recommend using the lock with our DuraFlex lids & hinge brackets. However, it can be used successfully with other leading brands of lids.



* Please note: if your bin has a latch plate or a hook as shown on fig. 2 & 3, these need to be removed before you can fit the lock.

DISCLAIMER:

Container Components Europe do not accept liability for any damage to container and warranty on lock is null and void if advised methods of fitting are not adhered to as per instructions.

BEFORE YOU START

To facilitate fitting in the same easy method within minutes a fitting template is provided in each kit.

The following step-by-step guide shows you how to fit the lock body onto the container and the quarter turn lock into the lid.

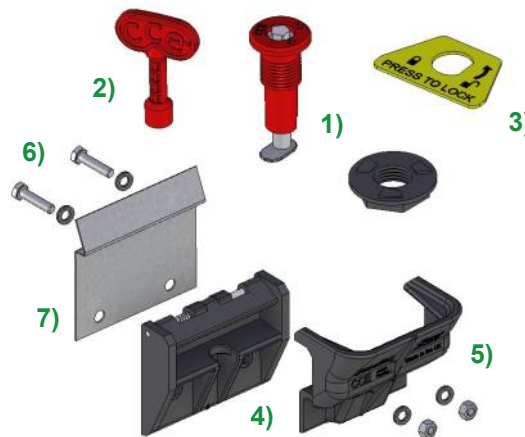
Please read the fitting instructions carefully before commencement and ensure

- all procedures are followed in a safe manner and
- PPE is worn at all times.

STEP-BY-STEP FITTING INSTRUCTIONS

Press2Lock kit contents:

- 1) Lock assembly & nut
- 2) Key *
- 3) Luminous instruction plate
- 4) Lock base assembly
- 5) Cover plate
- 6) 2 bolts, 2 nuts & 4 washers
- 7) Guide plate



Required tools:

- Measuring tape
- T-square or similar
- Marker pen
- Drill with 7mm bit
- 10mm open or ring spanner

* Additional keys are available.

The guide plate should be fitted to all brands of steel container.

The guide plate will

- protect the lock from damage,
- add extra guide control for the pawl on entry, and
- prevent the lock in the lid from resting, or fouling, on the back of the lock body if not fitted correctly.

How to prepare the bin & how to fit the lock base

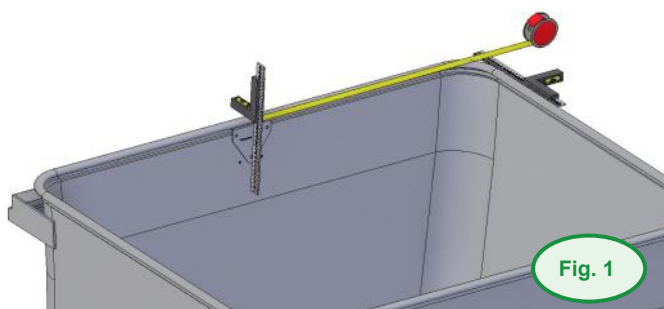


Fig. 1

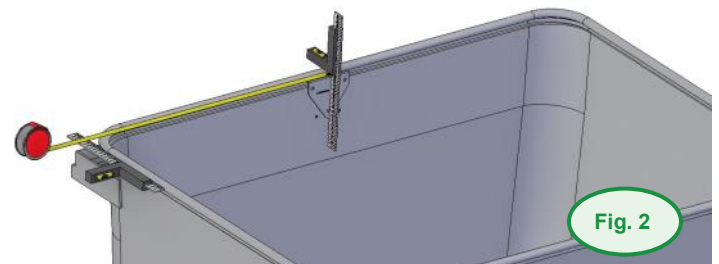


Fig. 2

Fig. 1 & 2)

Measure container from each side to determine the centreline, using T squares or similar. Measurement from each side should be equal. Use straight edge on side of container.

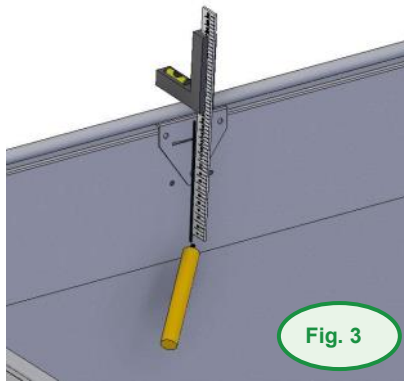


Fig. 3

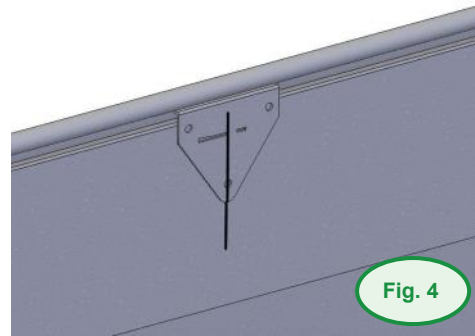


Fig. 4

Fig. 3 & 4)

Once the centreline is found mark a line in felt tip around 150mm long as shown above.

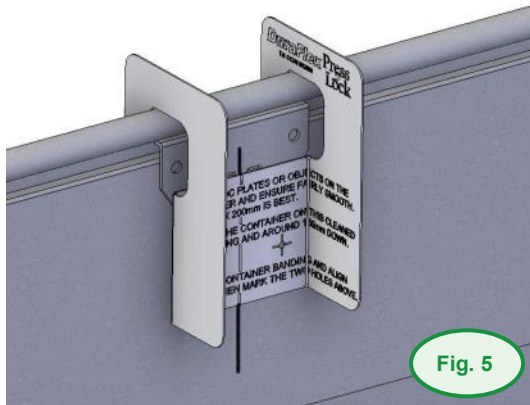


Fig. 5

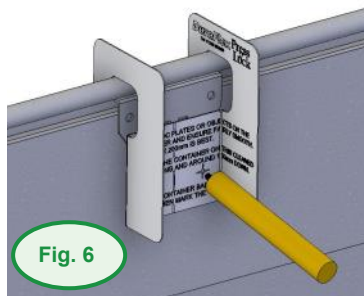


Fig. 6

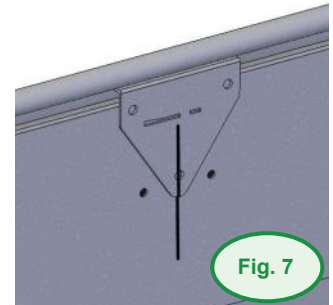


Fig. 7

Fig. 5 to 7)

Remove the template from your kit package and fold along creases as shown and hang over the banding, ensure the centrelines on the template and container line up.

Then mark the two hole positions as shown on the container face.

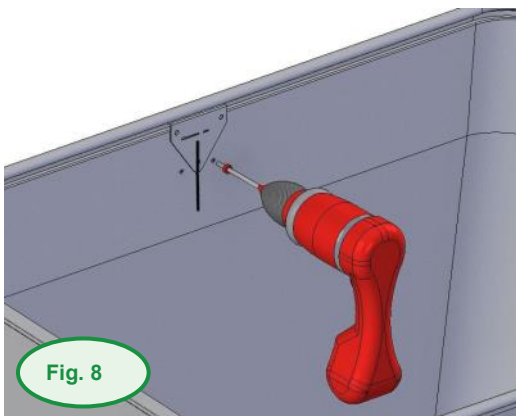


Fig. 8

Fig. 8)

Drill the two holes with a 7mm bit.

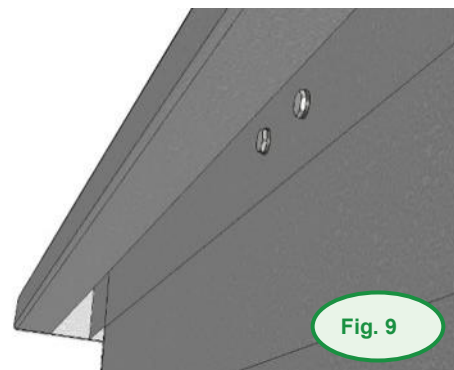


Fig. 9

Fig. 9)

Insert the two 6mm studs with washers on through the front face from under the comb.

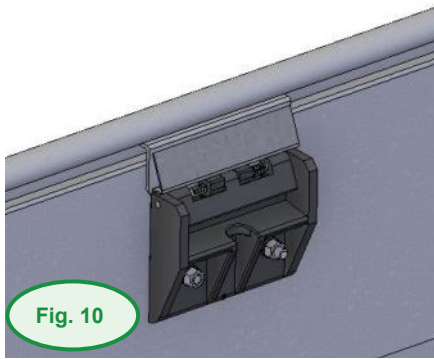


Fig. 10

Fig. 10)

Fit the guide plate over studs and slot the lock base over the two studs on top of the guide plate.

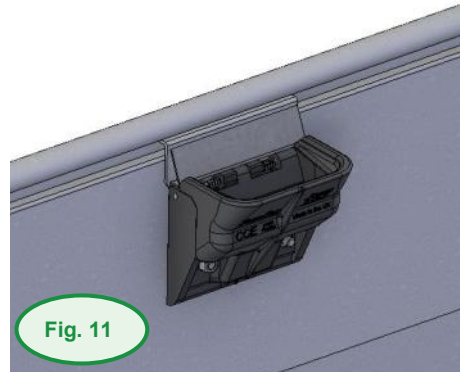


Fig. 11

Fig. 11)

Fit the lock cover part into place. Then place washers and nuts on and tighten.



Fig. 12

Fig. 12)

The base section of the lock is now complete and the container is ready.

Next job is to fit the **DuraFlex² Press LockTM** upper section into the lid.

How to fit the lock to the lid



Fig. 13

Fig. 13)

Take the DuraFlex lid or other suitable brand.



Fig. 14

Fig. 14)

Lay the luminous plate over the lock hole and simply thread the lock into the hole as shown.

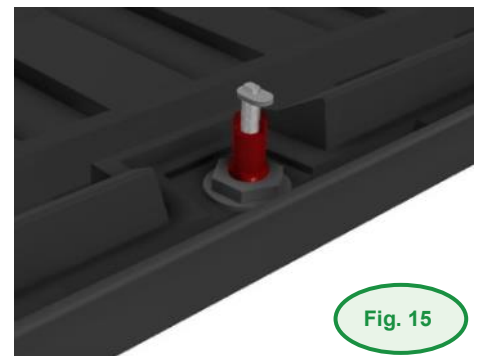


Fig. 15

Fig. 15)

Affix the patented auto lock nut on the underside and tighten up.

Please note:

When our Press2Lock is fitted to Taylor & Storm lids, this D shaped lock adaptor is required.

The adaptor should be pushed in from the underside before fitting lock body.

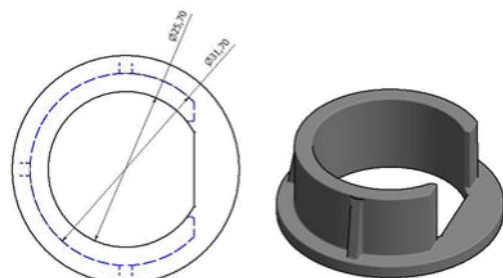




Fig. 16

Fig. 16)

The **DuraFlex** Press Lock™ is now fitted into the lid and is ready to be placed on container.

How to fit lid & how to operate the lock

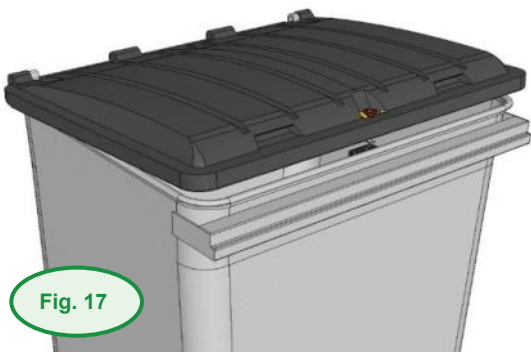


Fig. 17

Fig. 17)

Lay the lid in position on the container without the hinge bar fitted and ensure the lock pawl is just clear of hitting the banding as it shuts.

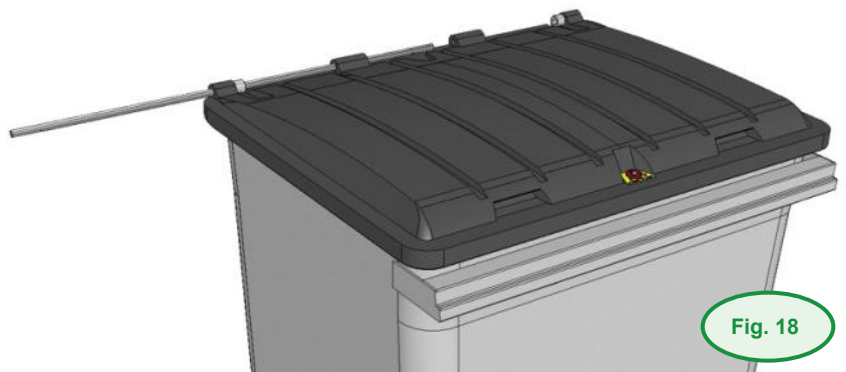


Fig. 18

Fig. 18)

Ensure holes are aligned between the hinge bracket & the lid and then thread bar into position.

We recommend using our adjustable hinge brackets. They can be bent backwards or forwards to align the lid with the holes in the brackets, so that any manufacturing tolerances in the container and lid are compensated for.

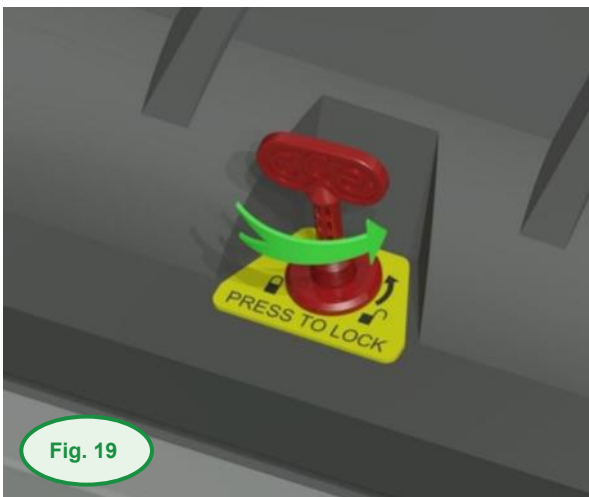


Fig. 19

Test the lid by lifting and lowering gently to ensure the lock pawl does not catch the container banding. Make small adjustment to the hinge brackets if needed. Finally press down on the lock and it will click shut.

Fig. 19)

Use the security pentagon key to undo the lock by turning it anti-clockwise.

The **DuraFlex** Press Lock™ and pentagon shaped key are coloured red to distinguish them from standard locks and also identifies them to truck drivers and all users as a working pair.



Your **DuraFlex** ^{Press Lock}™ is now ready to use.

Simply open the lid with the red pentagon security key and it will remain open until you decide to press to lock it.

The lock does not require any maintenance.



If you have any questions or if you need help:

Please feel free to contact us:

- > By telephone: +44 (0)1246 853696
- > By email to our Sales team: enq@duraflexlids.co.uk
- > By email to our Engineers dep.: mick@duraflexlids.co.uk