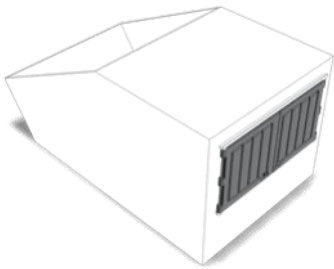


DR3232 SIDE HINGED LIDS

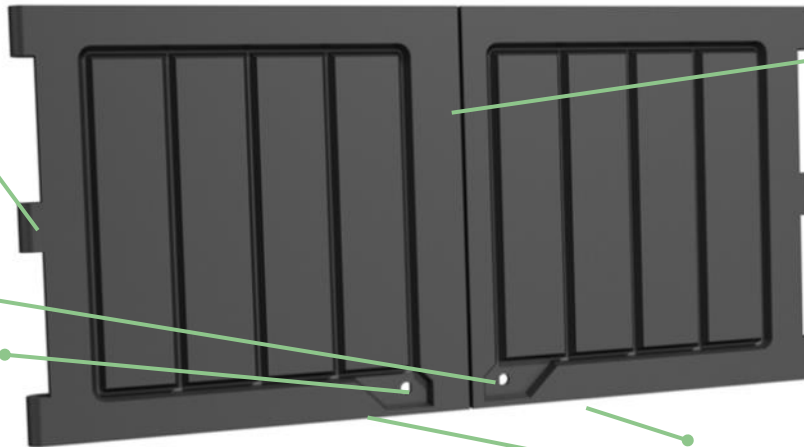
NORMALLY USED AS A PAIR OF OVERLAPPING DOORS.

LIGHTWEIGHT - ROBUST - USER FRIENDLY - COST EFFICIENT



3 hinges designed for **extra strength.**

Equipped to accept **patented CCE lock for security.**



Two lids used together to form an **overlapping pair prevents water ingress.**

2 mould-in handle slots **facilitate opening and closing.**

Can be used as **doors for Skips and Rolonoff containers.**

OPTIONS

> Also available in different dimensions (DR3635 and DR3838 doors).

AVAILABLE ACCESSORIES

> Locks

MATERIAL

> Rotationally moulded from **UV-stabilized LMDPE; double-walled; oil, chemical and frost resistant; 100% recyclable.**

COLOURS

> Available in **black** and a **wide variety of colours.**



TECHNICAL DIMENSIONS

